

Paddle Orifice Plate

Mac-Weld paddle orifice plates are available in a variety of bore styles

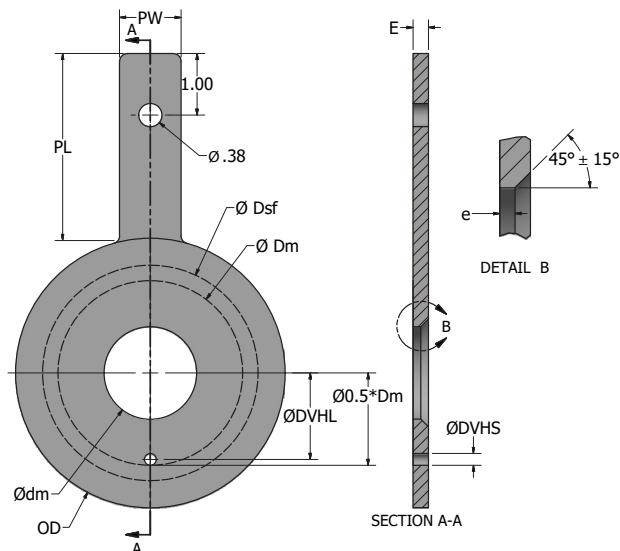
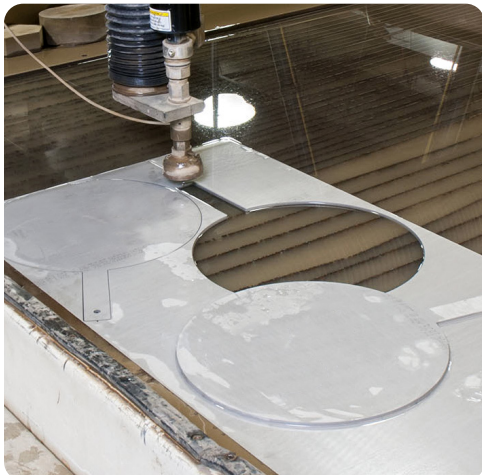


Mac-Weld Orifice Plates are manufactured to stringent requirements and only leave our plant once it has passed rigorous tests.

Stainless steel plates are specifically purchased for the job required. Individual plates are then water cut, ensuring no heat distortion happens, since distortion is a possibility with conventional cutting.

Features & Benefits:

- Standard sizes: 1/2" to 24" (also available in metric)
- Standard surface finish of 15 to 30 micro-inch
- Standard ratings from 150# to 2500# (also available in metric)
- Documentation and certificates available upon request
- Approved Canadian Registration Number (CRN) on most designs
- Orifice flange unions available upon request
- Available in various alloy materials including 316 Stainless Steel, Hastelloy®, Monel®, and other exotic alloys



Bore Styles:

- Beveled
- Restriction
- Quadrant
- Segmental
- Eccentric

