

The promise of precision, every time.



www.mac-weld.com

Revised (02/15/2023)

Integral Orifice Assembly

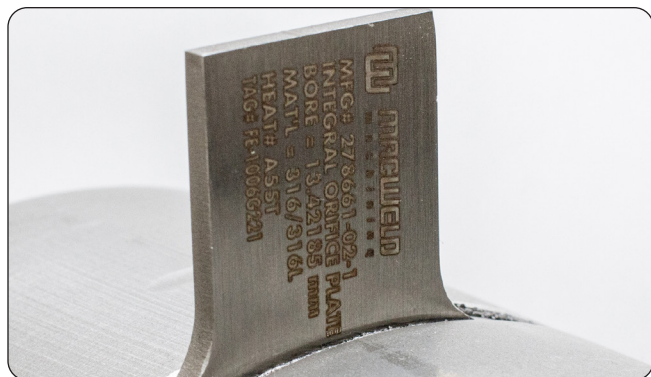
Ideal for liquid, gas and steam applications

Mac-Weld integral orifice assemblies help eliminate measurement inaccuracies possible with small orifice line installations.

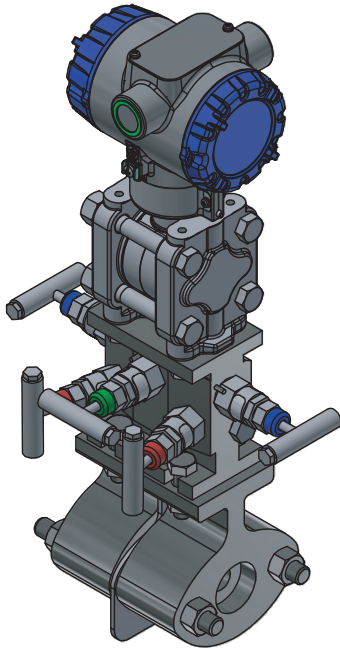
Integral Flow Orifice Assembly is used when differential pressure transmitter must be directly mounted on the orifice assembly. This eliminates cost of installation of differential pressure transmitter with impulse piping up to the orifice assembly. This fully integrated flow meter eliminates the need for fittings, tubing, valves, adapters, and mounting brackets, thereby reducing welding and installation time. The transmitter is mounted directly to the orifice assembly or through an H style manifold valve (3 or 5 Valve).

Design Advantages:

- Higher rate or accuracy in volumetric flow rate
- Light weight design compared to orifice flange
- Allows direct mounting of manifold valves and transmitters
- Sold as a single unit or as part of a complete meter run
- Line sizes available up to a maximum of 1.5"
- Available connections; socket weld and threaded
- Large selection of materials available
- Custom designs available upon request
- NACE compliant



INTEGRAL ORIFICE ASSEMBLY



Integral Orifice Assembly with valve and transmitter

