

The promise of precision, every time.



www.mac-weld.com

Revised (06/30/2022)

Bleed Ring Assembly

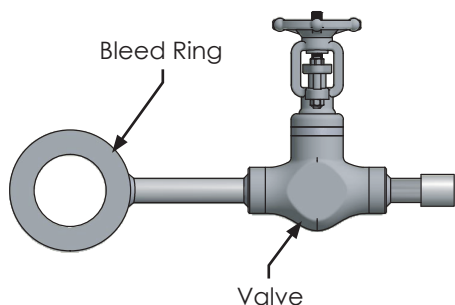
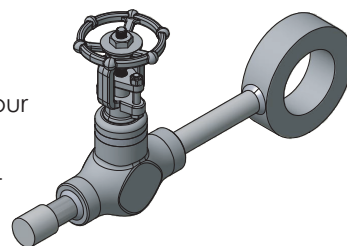
Mac-Weld assemblies are available in a variety of configurations & materials

These assemblies can be assembled and tested in advance, and shipped directly to the site, saving you time and money.

Mac-Weld bleed rings are manufactured to accept standard level transmitters or can be customized for your particular application. All assemblies are quality checked and tested to code, prior to being shipped.

Specifications:

- Allows for easier installation on-site
- Engineered and manufactured-in-house, designs can be adapted and modified for your specific application
- Various valve options available upon request
- Manufactured in accordance with ASME, ASTM and ANSI standards
- CRN approval available upon request



Bleed Ring Assembly

- This assembly features a weld-in port extensions, with dual gate valves.



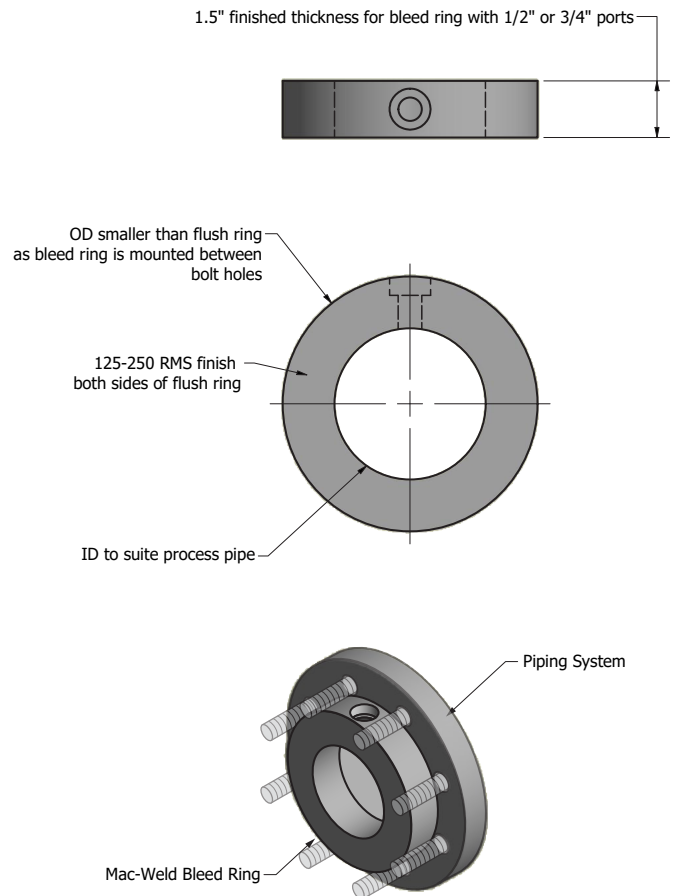
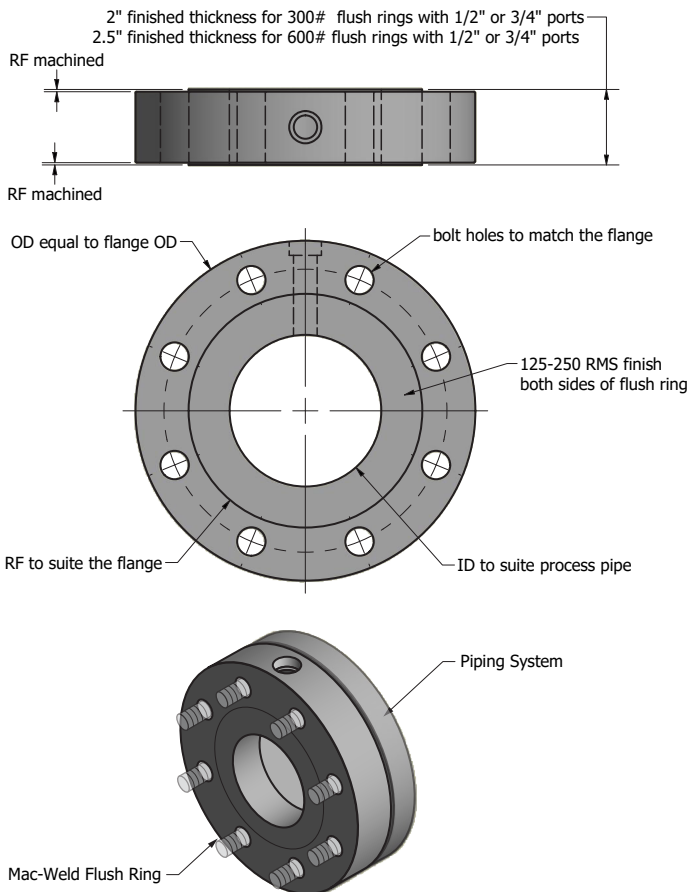
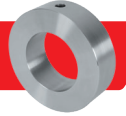
FLUSH/BLEED RING COMPARISON

Flush Ring



OR

Bleed Ring



Notes:

- Material requirements are greater for flush ring as compared with bleed ring. OD of a flush ring and thickness are significantly greater than those of bleed ring.
- Raw materials sourced for production are significantly more expensive for flush rings due to greater OD and greater thickness
- Flush Rings require significantly greater manufacturing time, as compared to a simple bleed ring.



Thermowells



Orifice Plates



Bleed & Flush Rings



Pressure Vessels



Valves & Manifolds



Specialty Products