

The promise of precision, every time.



www.mac-weld.com

Revised (05/15/2023)

Seal Pots & Condensate Chambers

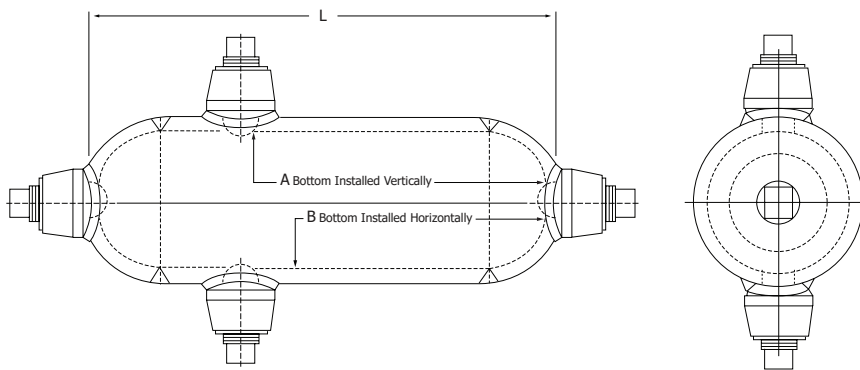
Providing a constant liquid head on each side of a flow meter

Mac-Weld seal pots are used to provide a constant liquid head on each side of a flow meter involving steam or other condensable vapours.

With a sealing liquid, they also isolate the instrument from the process.
Mac-Weld seal pots are fabricated from A106 CS & 316 SS seamless pipe.
Connections are 1/2" NPT, finished with solid steel plugs.

Specifications:

- Carbon Steel and Stainless Steel construction
- Schedule 40 or 80 seamless pipe and 3000 or 6000 lb ports
- Hydro test included
- All outlets plugged with solid steel plugs
- Finished: Red or Grey Oxide Primer (for Carbon Steel Pots)
- Connections can also be 3/4" NPT and 1" NPT olets

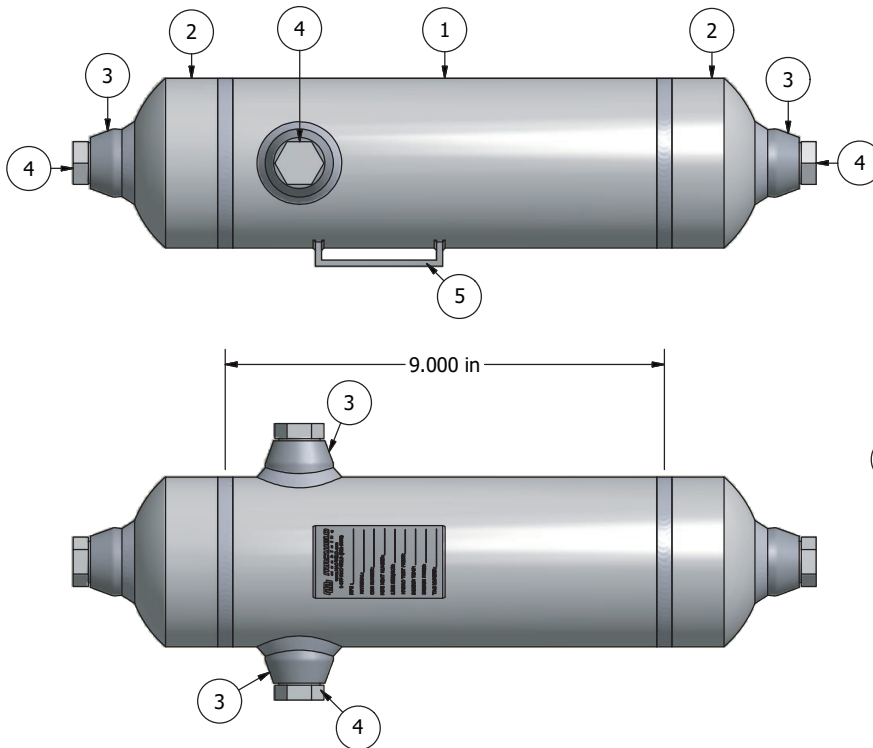



Model	Length (L)	Pipe Size	Number of Ports	Port Size	Pipe
SP-3-40-08- E or L SP-3-80-08- E or L	13" 13"	3" 3"	4 4	1/2" 1/2"	Schedule 40 Schedule 80
SP-4-40-08- E or L SP-4-80-08- E or L	14" 14"	4" 4"	4 4	1/2" 1/2"	Schedule 40 Schedule 80
SP-6-40-08- E or L SP-6-80-08- E or L	TBA TBA	6" 6"	4 4	1/2" 1/2"	Schedule 40 Schedule 80

08 = 1/2 NPT • E = A105 Carbon St. • L= 316L

Seal Pot Components

1. Pipe, SMLS
2. Pipe Cap, BW
3. Threadolet
4. Hex Head Plug, NPT
5. Mac-Weld Seal Pot - Name Plate





www.MAC-WELD.com
1-877-MAC-WELD (622-9353)

MFG: _____

MATERIAL: _____

CRN NUMBER: _____

PIPE HEAT NUMBER: _____

LINE SIZE/SCH: _____

HYDRO TEST PRESS: _____

DESIGN TEMP: _____

DESIGN PRESS: _____

TAG NUMBER: _____

Examples of Seal Pot Configurations

